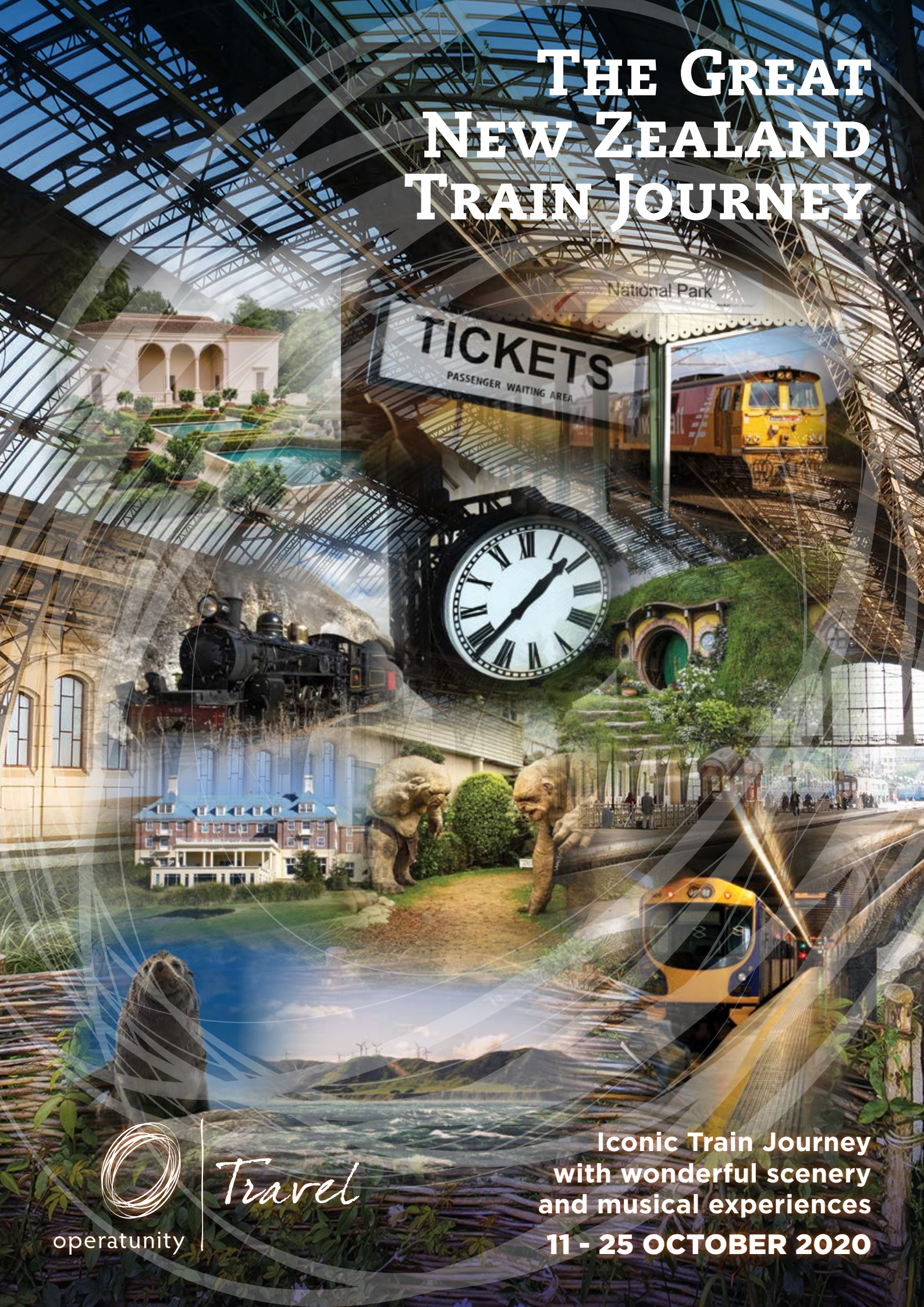


THE GREAT NEW ZEALAND TRAIN JOURNEY



operatunity

Travel

Iconic Train Journey
with wonderful scenery
and musical experiences
11 - 25 OCTOBER 2020

THE GREAT NEW ZEALAND TRAIN JOURNEY

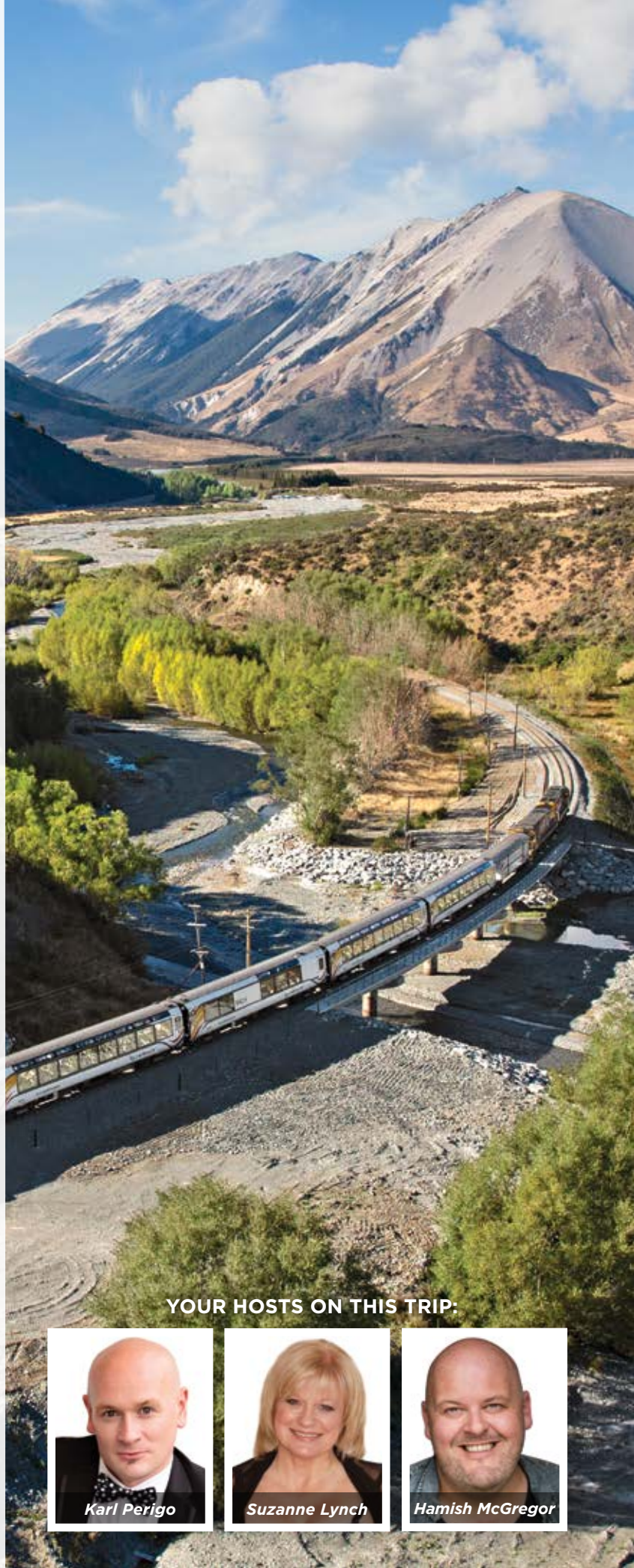
Iconic train journey with wonderful
scenery and musical experiences

11 - 25 OCTOBER 2020

Train whistle blowin', all aboard and we are on the road (or on the train tracks!) for the Greatest New Zealand Train Journey which combines all the bygone glory of train travel, with fun and laughter with our escorts, as well as incredible musical events in beautiful settings around New Zealand.

Experience the Exceptional...

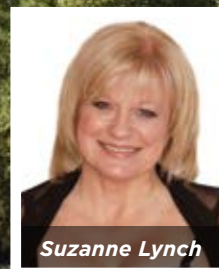
- Train rides through beautiful farmlands, rugged coastlines, the volcanic plateau, undulating mountains and lush forests.
- Musical experiences along the way which include a gala event at Hamilton Gardens, with themed concerts in themed gardens with themed food to top it all off. Other musical experiences include a dine and dance, a vineyard concert and dinner, and a gala concert at the Tongariro Chateau.
- Entertainment from our escorts on board our carriage as we travel through our country, the most beautiful country in the world.
- Numerous tours and experiences from Hobbiton to the Weta Museum to glimpse behind the scenes of The Lord of the Rings, to the International Antarctic Centre, wine tasting in Blenheim and so much more.
- Love, care and laughter from our incredible tour hosts Karl Perigo, Suzanne Lynch and Hamish McGregor



YOUR HOSTS ON THIS TRIP:



Karl Perigo



Suzanne Lynch



Hamish McGregor

OUR TRAIN AND BOAT JOURNEY

Our train journey takes us through many parts of New Zealand. The plan is we put our luggage on our coach so we don't need to concern ourselves with luggage on the train. The coach drops us off and we enjoy time on the train while the coach drives our luggage to the next destination.

Then we enjoy concerts and singalongs in our own carriage and watch the world go by!

Northern Explorer - North Island

We will see fantastic views of New Zealand from farmland, rugged bush landscapes and the engineering masterpiece that is the Raurimu Spiral, to passing the majestic volcanoes of Mt Tongariro, Mt Ngauruhoe and Mt Ruapehu - the home of the North Island ski fields.

We then descend through stunning river gorges to the farming landscapes and rocky sea scapes of the lower North Island - all from large panoramic windows and the open-air viewing deck of the Northern Explorer train.

Interislander - Wellington - Picton

The Interislander travels the Cook Strait between the North and South Islands of New Zealand and is one of the most spectacular cruises in the world. The 92 km journey between Wellington and Picton is one of New Zealand's most iconic tourist experiences.

Coastal Pacific Train

On one side of your train you will see the wine growing region of Blenheim and the rugged Kaikoura mountain ranges; on the other side the Pacific Ocean coastline with views of marine wildlife such as seals and penguins, and some of New Zealand's finest horticultural and farmland areas of the Canterbury Plains.

TranzAlpine - Christchurch - Southern Alps - Greymouth (and return)

Travelling west crossing the Canterbury Plains, the train slowly ascends through spectacular gorges and river valleys of the Waimakariri River towards the Southern Alps to the alpine village of Arthurs Pass. From here we descend through the Otira Tunnel to the West Coast of New Zealand's South Island, through lush alpine forests to Greymouth.



SUNDAY 11 OCTOBER 2020 (D)
Grand Mercure Hotel, Auckland (1 night)

Today we meet from around New Zealand in preparation for our train journey starting early tomorrow. We meet for a casual dinner tonight.

MONDAY 12 OCTOBER 2020 (B, L, D)
AUCKLAND - HAMILTON ON TRAIN
Novotel Hamilton Tainui (3 nights)

Novotel Hamilton Tainui is a four-star hotel, centrally located on the banks of Waikato River, which offers an award-winning restaurant, a fitness centre, a sauna and massage facilities.

Highlights include:

- Train journey from Auckland to Hamilton leaving from The Strand.
- Transfer to Hobbiton where we step into the lush pastures of the Shire, as seen in The Lord of the Rings and The Hobbit trilogies, for a tour and lunch.
- Welcome dinner at our hotel this evening, accompanied by *Showstoppers* concert from our escorts.

TUESDAY 13 OCTOBER 2020 (B, L, D)

Highlights include:

- Transfer to Tirau with time to wander and shop.
- Lunch at the beautiful Hotel Henley with time to wander the grounds and enjoy the ambience of this lovely estate.
- Dine and dance with *Celebrate the 50's to the 70's* at Woodlands this evening led by our great team!

WEDNESDAY 14 OCTOBER 2020 (B, D)

Highlights include:

- Free time this morning for shopping - we are situated right in town, so shops are within very easy walking distance.
- One of our premium events this evening: themed concerts at the magnificent Hamilton Gardens. Each garden has its own theme and we will enhance your experience in the already beautiful gardens by presenting themed concerts in each garden, complemented by specially themed food.



THURSDAY 15 OCTOBER 2020 (B, D)
HAMILTON - NATIONAL PARK ON TRAIN
Chateau Tongariro (2 nights)

The Chateau sits in the fourth oldest national park in the world (Tongariro, established 1894) at an elevation of more than 1100m. The five-storey, 134-room property can be seen for miles and is an iconic Kiwi hotel.

Highlights include:

- Train journey with wonderful scenery between Hamilton and Tongariro National Park.
- A visit to the National Army Museum in Waiouru.
- A sumptuous feast of cuisine and a gala concert *Climb Every Mountain*, featuring famous songs from music theatre in the private dining room at the Chateau.

FRIDAY 16 OCTOBER 2020 (B, L)

Highlights include:

- Tour of the local area: a scenic drive around Mt Tongariro and Mt Ruapehu.
- Lunch and tour of Lauren's Lavender Farm, Taumarunui.
- Dinner (own cost) then a chance to catch a movie in the private movie theatre at the Chateau. *Murder on the Orient Express* - let's hope there is no such thing for us on the train in a couple of days!



SATURDAY 17 OCTOBER 2020 (B, L, D)
TONGARIRO NATIONAL PARK - WELLINGTON BY TRAIN

Novotel (3 nights)

The Novotel offers direct access to the Lambton Quay shopping area, just a ten minute walk from Wellington Station. This hotel features rooms with floor-to-ceiling windows and panoramic views.

Highlights include:

- Another incredible train journey through the lower half of the North Island.
- A picnic lunch on board with lots of chance for a singalong today as we travel through farmlands and lovely scenery on our way to Wellington.
- A casual dinner at our hotel this evening.

SUNDAY 18 OCTOBER 2020 (B)

Highlights include:

- A City Tour of Wellington including Wellington central area, a trip to the top of Mt Victoria, with its great views over Wellington, a visit to Te Papa and a tour of the Parliament buildings.
- Free time this afternoon for your own activities or a chance to catch up with friends.



MONDAY 19 OCTOBER 2020 (B, D)

Highlights include:

- Experience a tour of the amazing Weta Workshop.
- Tonight, dinner will be at The Bresolin, an award-winning fine dining restaurant, accompanied by music from our singers and laughter: *Love and Laughter*.

TUESDAY 20 OCTOBER 2020 (B)

Scenic Hotel, Blenheim (2 nights)

Today we are off to the South Island on the Interislander and enjoy the magnificent views of the Marlborough Sounds.

The Scenic Hotel Marlborough is located in the heart of Marlborough Wine Country, internationally renowned for its Sauvignon Blanc.

Highlights include:

- Cruise through the Marlborough Sounds, spot dolphins and enjoy the glorious scenery as we travel through the Sounds.
- Experience the outstanding Knights of the Sky exhibition, featuring Sir Peter Jackson's own collection of WW1 aircraft and artifacts. The story of aviation in the Great War is theatrically brought to life by the internationally acclaimed talent of WingNut Films and Weta Workshop.
- Free evening to relax and grab some dinner at leisure.



WEDNESDAY 21 OCTOBER 2020 (B, L, D)

Highlights include:

- This morning we enjoy wine tasting at Forrest Winery. Established in 1988, this vineyard specialises in award-winning Sauvignon Blanc.
- Lunch at Twelve Trees Restaurant at the Allan Scott Family Winery.
- Wither Hills Cellar Door & Restaurant for our dinner with entertainment *Wine be the Food of Love* provided by the hosts.

THURSDAY 22 OCTOBER 2020 (B)

BLenheim - KAikoura - CHRISTCHURCH ON THE TRAIN

CHRISTCHURCH

- Novotel Cathedral Square Hotel (3 nights)

We travel down one of the most beautiful coasts in New Zealand - with its crashing waves, rugged rocks and seal colonies - to Kaikoura and then onto Christchurch.

Novotel Christchurch Cathedral Square is superbly located in the heart of the Garden City.

Highlights include:

- An iconic and stunning train ride down the East Coast from Blenheim to Christchurch.

- City tour of Christchurch on arrival.
- A visit to the International Antarctic Centre to view their amazing displays and enjoy seeing the penguins.

FRIDAY 23 OCTOBER 2020 (B, L)

Today we enjoy one of the most magnificent train journeys in the world, the TranzAlpine. We travel coast to coast from Christchurch to Greymouth and experience the striking beauty of the Southern Alps, the ice-fed Waimakariri River through to unique native beech forests.

SATURDAY 24 OCTOBER 2020 (B, D)

Highlights include:

- A tour of the Wigram Airforce Museum.
- Final night dinner at Hinton Vineyard with entertainment from our escorts. *Train Whistle Blowin'*, featuring famous songs from the 50s and 60s and especially anything about trains, buses or ships!

SUNDAY 25 OCTOBER 2020 (B)

We are transferred to the airport to make our way home taking with us some wonderful memories of our beautiful country.





\$6,750 *per person
twin share*

Single Room supplement add \$1,960

Initial Deposit on booking **\$900**

Second Deposit due 22 May 2020 **\$2,000**

Final Balance due 07 July 2020

Deposits refundable (less costs incurred) prior to FINAL BALANCE DUE DATE. Itinerary details are subject to change, however any changes will be replaced with a comparable or better option.

THIS TRIP INCLUDES:

- 14 nights' accommodation in 4-star hotels: Auckland (1 night), Hamilton (3 nights), Chateau Tongariro (2 nights), Wellington (3 nights), Blenheim (2 nights), Christchurch (3 nights).
- Train journeys: Northern Explorer Auckland - Hamilton - National Park - Wellington // Coastal Pacific, Blenheim - Christchurch // TranzAlpine Christchurch - Greymouth (return).
- Other transport - Interislander Ferry one-way Wellington to Picton, plus all transfers, including luggage and people by coach included.
- Musical experiences include gala themed event at Hamilton Gardens, *Train Whistle Blowin'* at Hinton Vineyard, *Climb Every Mountain* at the Chateau, *Love and Laughter* at the Bresolin, *Celebrate the 50s to the 70s* at Woodlands, *Wine be the Food of Love* at Twelve Trees Vineyard plus singalongs and fun on the train.
- Numerous experiences such as tours of Weta Workshop, Hobbiton, Knights of the Sky, International Antarctic Centre, Te Papa, National Army Museum and the Wigram Airforce Museum.
- Activity highlights include wine tasting in Blenheim, special movie night at the Chateau to watch *Murder on the Orient Express* and tour of National Park.
- All breakfasts, 6 lunches and 9 dinners included.
- Hosted by Karl Perigo, Suzanne Lynch and Hamish McGregor.

PLEASE NOTE: As our travellers are coming from all over NZ, airfares are not included.

EASY TOUR

This tour will suit people with a stick, but not a walker. You will be required to walk to get from place to place and stand in museums, but it is designed to be an easy tour with lots of times to rest, travel on a coach and walk easy leisurely distances. You will need to be able to get on and off a train with ease and walk through the train stations.

IMPORTANT INFORMATION

- All trips are subject to change but any changes will be of equal or greater value.
- Deposits refundable until final payment date minus any costs incurred, or an administration fee of up to \$300.
- Travellers need to be independently mobile and fit to travel.
- Travellers are required to obtain comprehensive travel insurance for all international trips.
- Please refer to terms & conditions on our booking form.



operatunity

Toll Free: 0508 886 489

email: travel@operatunity.co.nz | **www.operatunity.co.nz**

PO Box 132 150 Sylvia Park, Auckland 1644, New Zealand